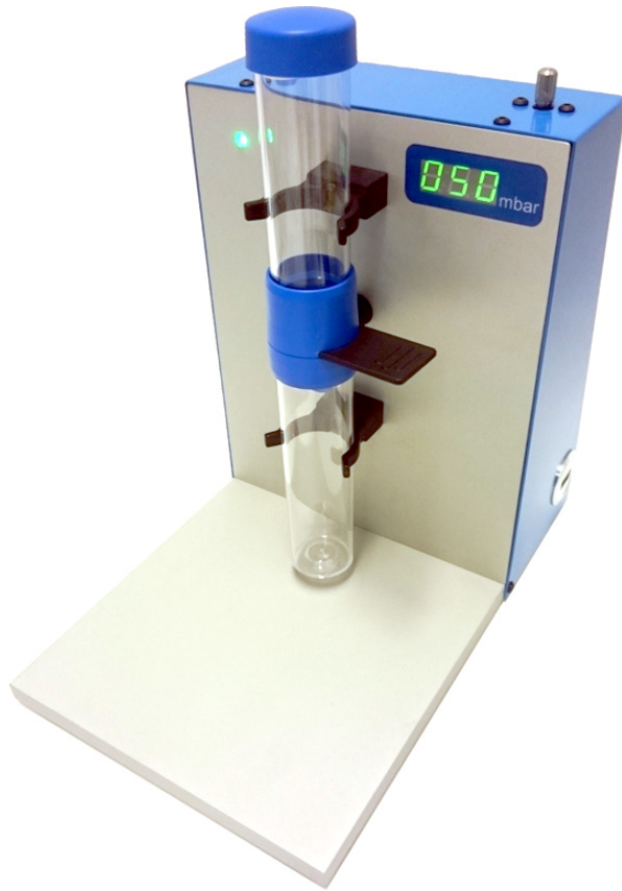


Cell Filtration and Staining

VyCAP's Filtration System

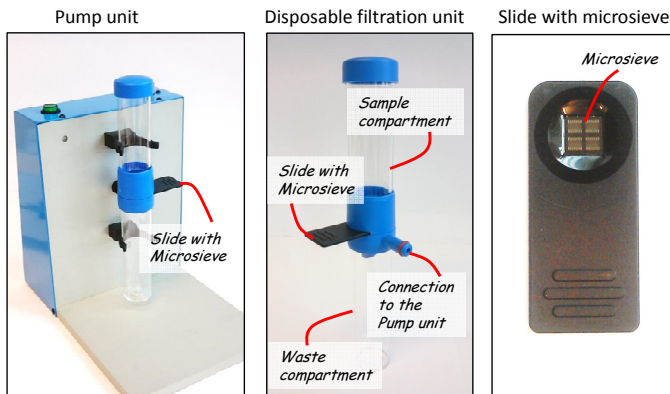


Filtration and labelling of cells in one solution



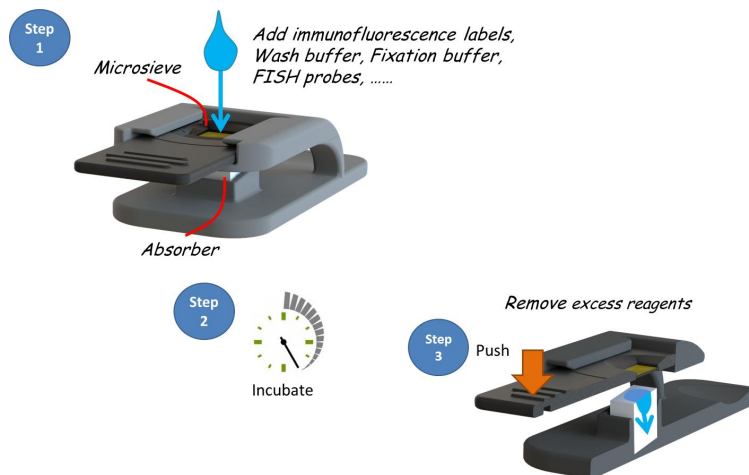
“...super flat membrane, perfect for fluorescence imaging.”

Filtration



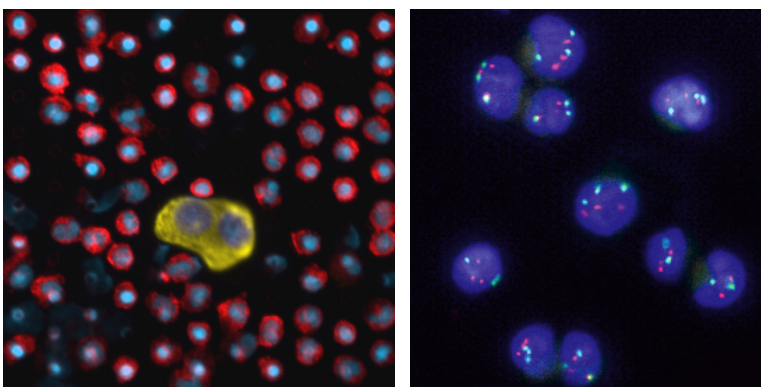
The filtration system consists of a pump, a disposable filtration unit and a slide that contains a silicon microsieve. After filtration the slide is pulled out from the filtration unit. The thin silicon nitride membrane allows using very low filtration pressures, resulting in minimal cell damage.

Cell labelling



After the slide has been removed from the filtration unit it is transferred to the CellStainer. Labelling reagents, wash- or permeabilization buffers, are added on the microsieve. After incubation the excess reagents are removed by pushing the sieve onto the absorber.

Cell Imaging



After labelling fluorescence images of the cells are acquired. The atomically flat microsieve membrane has no auto-fluorescence and is ideal for fluorescence microscopy.

Left: One CTC surrounded by leukocytes.
Right: FISH on cells collected on a microsieve